

BEYOND THE BLUE HORIZON

Words by
LEO ROBIN

from the Paramount Picture
"MONTE CARLO"
Orchestral Arrangement by
JIMMY LALLY

Music by
RICHARD A. WHITING
and W. FRANKE HARLING

Easy Moderate Tempo

Drums

mf *wire brushes*

Chos. Smoothly

Copyright MCMXXX by Famous Music Corp., 719 Seventh Ave., N.Y.C.
This arrangement Copyright MCMLI by Famous Music Corp., N.Y.C.
CHAPPELL & CO., LTD., 50, New Bond Street, London, W.1, and Sydney
40995

9358

International Copyright Secured
Made in England
All rights reserved

BEYOND THE BLUE HORIZON

Words by
LEO ROBIN

from the Paramount Picture
"MONTE CARLO"
Orchestral Arrangement by
JIMMY LALLY

Music by
RICHARD A. WHITING
and W. FRANKE HARLING

Easy Moderate Tempo

Bass

Chos. Smoothly

Alco *Pizz* *cresc.*

Copyright MCMXXX by Famous Music Corp., 719 Seventh Ave., N.Y.C.
This arrangement Copyright MCMLI by Famous Music Corp., N.Y.C.
CHAPPELL & CO., LTD., 50, New Bond Street, London, W.1, and Sydney
40995

9358

International Copyright Secured
Made in England
All rights reserved

BEYOND THE BLUE HORIZON

Words by
LEO ROBIN

2nd Trombone
Orchestral Arrangement by
JIMMY LALLY

Music by
RICHARD A. WHITING
and W. FRANKE HARLING

Easy Moderate Tempo

mf

Chos.
Smoothly

Harmon mute

mf

mf

Soli

mf

2nd Trombone

mf

Mute out

ppv

ppv

1^o

2^o Open

mf

mf

mf

4

cresc.

f

BEYOND THE BLUE HORIZON

Words by
LEO ROBIN

1st Trombone
Orchestral Arrangement by
JIMMY LALLY

Music by
RICHARD A. WHITING
and W. FRANKE HARLING

Easy Moderate Tempo

Copyright MCMXXX by Famous Music Corp., 719 Seventh Ave., N.Y.C.
This arrangement Copyright MCMLI by Famous Music Corp., N.Y.C.
CHAPPELL & CO., LTD., 50, New Bond Street, London, W.1, and Sydney
40995

9358

International Copyright Secured
Made in England
All rights reserved

1st Trombone

BEYOND THE BLUE HORIZON

E♭ Baritone Saxophone

Words by
LEO ROBIN

Orchestral Arrangement by
JIMMY LALLY

Music by
RICHARD A. WHITING
and W. FRANKE HARLING

Easy Moderate Tempo

E♭ Baritone Saxophone

BEYOND THE BLUE HORIZON

Words by
LEO ROBIN

2nd B^b Tenor Saxophone
Orchestral Arrangement by
JIMMY LALLY

Music by
RICHARD A. WHITING
and W. FRANKE HARLING

Easy Moderate Tempo

2nd B^b Tenor Saxophone

BEYOND THE BLUE HORIZON

2nd E \flat Alto Saxophone

Words by
LEO ROBIN

Orchestral Arrangement by
JIMMY LALLY

Music
RICHARD A. WHITING
and W. FRANKE HARLING

Easy Moderate Tempo

2nd E \flat Alto Saxophone

BEYOND THE BLUE HORIZON

Words by
LEO ROBIN

1st B^b Tenor Saxophone

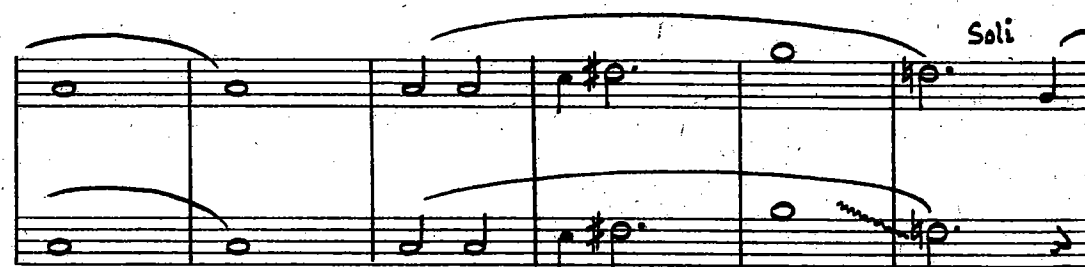
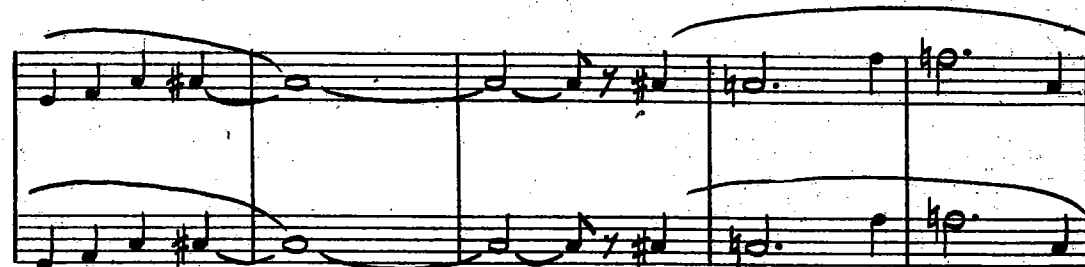
Orchestral Arrangement by
JIMMY LALLY

Music by
RICHARD A. WHITING
and W. FRANKE HARLING

Easy Moderate Tempo



Chos.

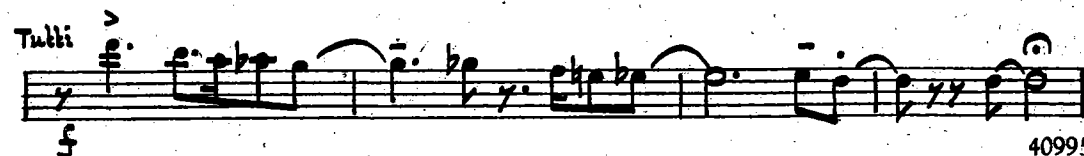
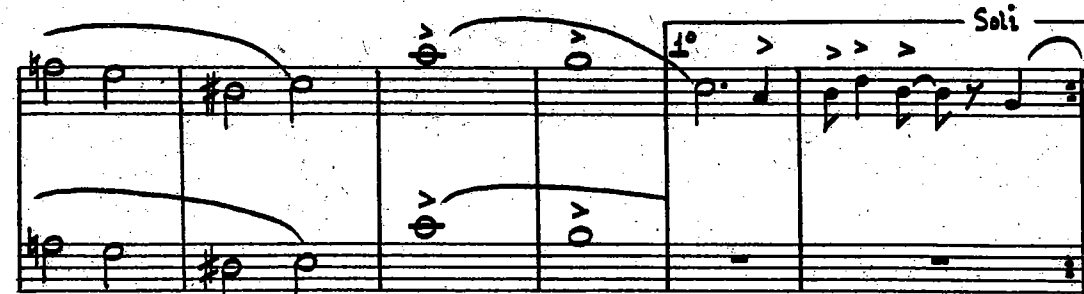


Copyright MCMXXX by Famous Music Corp., 719 Seventh Ave., N.Y.C.
This arrangement Copyright MCMLI by Famous Music Corp., N.Y.C.
CHAPPELL & CO., LTD., 50, New Bond Street, London, W.1, and Sydney
40995

9358

International Copyright Secured
Made in England
All rights reserved

1st B^b Tenor Saxophone



40995

BEYOND THE BLUE HORIZON

Words by
LEO ROBIN

1st E^b Alto Saxophone

Orchestral Arrangement by
JIMMY LALLY

Music by
RICHARD A. WHITING
and W. FRANKE HARLING

Easy Moderate Tempo

Copyright MCMXXX by Famous Music Corp., 719 Seventh Ave., N.Y.C.
This arrangement Copyright MCMLI by Famous Music Corp., N.Y.C.
CHAPPELL & CO., LTD., 50, New Bond Street, London, W.1, and Sydney
40995

9358

International Copyright Secured
Made in England
All rights reserved

1st E^b Alto Saxophone

BEYOND THE BLUE HORIZON

Words by
LEO ROBIN

3rd Trumpet in B \flat
Orchestral Arrangement by
JIMMY LALLY

Music by
RICHARD A. WHITING
and W. FRANKE HARLING

Easy Moderate Tempo

mf

Chos.

Smoothly
Harmon mute

Soli

mp

3rd Trumpet in B \flat

mf
Mute out

1^o

Open

4

Cresc.

BEYOND THE BLUE HORIZON

Words by
LEO ROBIN

2nd Trumpet in B \flat

Orchestral Arrangement by
JIMMY LALLY

Music by
RICHARD A. WHITING
and W. FRANKE HARLING

Easy Moderate Tempo

Chos. Smoothly

Soli

Copyright MCMXXX by Famous Music Corp., 719 Seventh Ave., N.Y.C.
This arrangement Copyright MCMLI by Famous Music Corp., N.Y.C.
CHAPPELL & CO., LTD., 50, New Bond Street, London, W.1, and Sydney
40995

9358

International Copyright Secure
Made in England
All rights reserve

2nd Trumpet in B \flat

1 $^{\circ}$ 2 $^{\circ}$ Open

4

BEYOND THE BLUE HORIZON

Words by
LEO ROBIN

1st Trumpet in B \flat

Orchestral Arrangement by
JIMMY LALLY

Music by
RICHARD A. WHITING
and W. FRANKE HARLING

Easy Moderate Tempo

mf

Chos. Smoothly

mf

Harmon mute

Soli

mf

1st Trumpet in B \flat

mf

Mute out

1^o

mf

2^o Open

4

Cresc.

5

BEYOND THE BLUE HORIZON

from the Paramount Picture
"MONTE CARLO"

Arrangement for Orchestra by
JIMMY LALLY

Words by
LEO ROBIN
Music by
RICHARD A. WHITING
& W. FRANKE HARLING

Easy moderate tempo **Piano**

Musical notation for the piano introduction, featuring chords G6, F#6, G6, Adim, Cm6, and Be-D7.

VOCAL CHORUS (*smoothly*)

Musical notation for the vocal chorus, first line: "yond the blue ho-ri zon," with chords G, Gdim, G6, Cm, D9, D7-9.

Musical notation for the vocal chorus, second line: "Waits a beau-ti-ful day. Good-" with chords G6, Gdim, G, E9.

Musical notation for the vocal chorus, third line: "-bye to things that bore me," with chords Am7, Cm6, G, Gm6.

Copyright MCMXXX by Famous Music Corp., 719, Seventh Ave., N. Y. C.
This arrangement Copyright MCMLI by Famous Music Corp., N. Y. C.
CHAPPELL & CO., LTD., 50, New Bond Street, London, W. 1 & Sydney
40995

All rights reserved
Made in England
International Copyright Secured.

2

Piano

Musical notation for piano accompaniment, first line: "Joy is wait-ing for me. I" with chords A13, A7, A9, D7, D7+.

Musical notation for piano accompaniment, second line: "see a blue ho-ri zon," with chords G, Gdim, G6, Cm, D9, D7-9.

Musical notation for piano accompaniment, third line: "My life has on-ly be-gun Be-" with chords G, Gdim, E7.

Musical notation for piano accompaniment, fourth line: "-yond the blue ho-ri zon Lies a" with chords Am7, Am7, Cm6, Am7, Cm6, G6, F#7, Em.

Musical notation for piano accompaniment, fifth line: "ris-ing sun. Be-" with chords Am7, D13, G, Bb dim, Am7, D7.

40995

Chappell

Piano

2

sun. G Eb7 Bbm Gb7 Eb7 Ab6 Abdim Ab6

mf

Dbm6 Eb9 Eb7-9 Ab Adim Gdim

F7-9 Ddim Dbdim Ten. Sax. Gdim Bbm7 Dbm6

Dbm6 Ab G7 Fm Bbm7 *cresc.* Eb7

Eb7-9 Ab6 Ab6 *Fine*